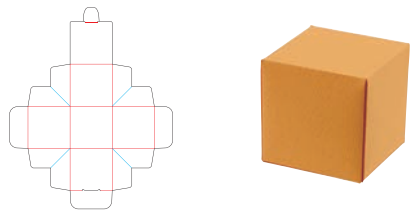
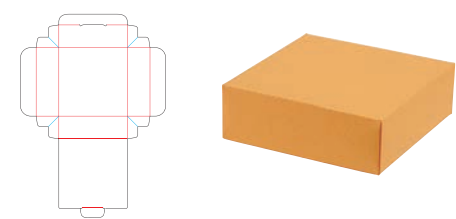




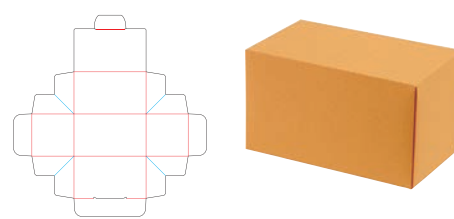
No.1



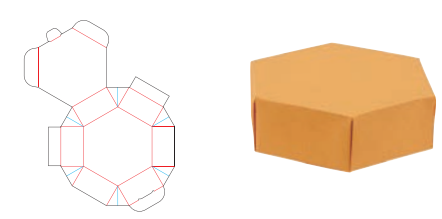
No.2



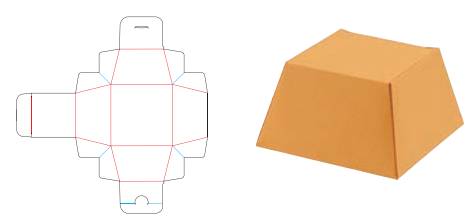
No.3



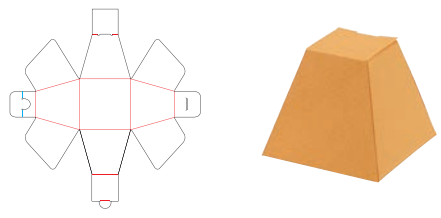
No.4



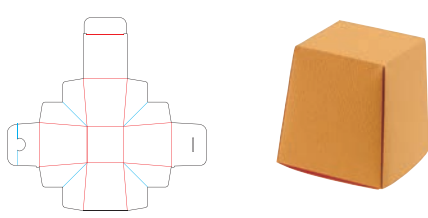
No.5



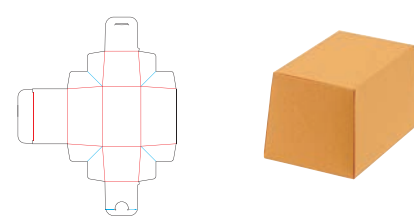
No.6



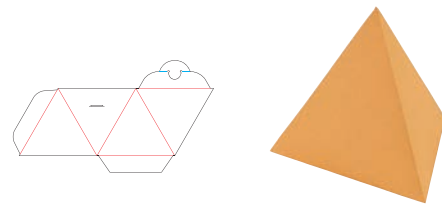
No.7



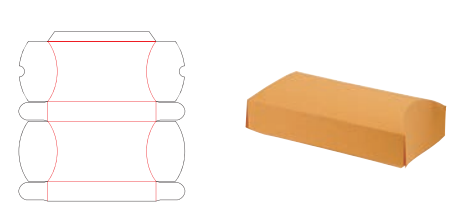
No.8



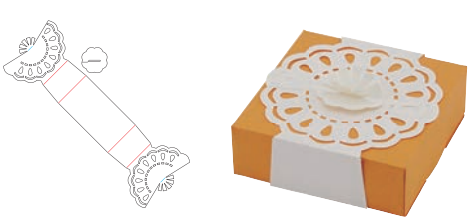
No.9



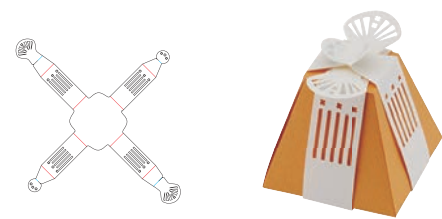
No.10



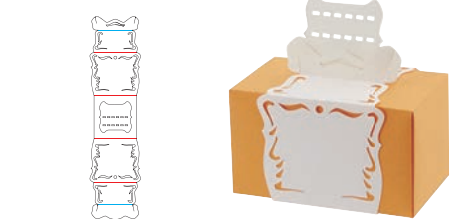
No.11



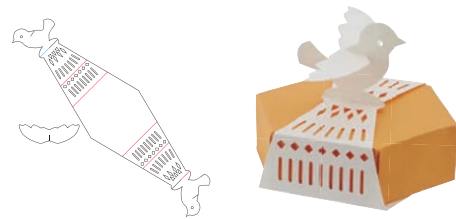
No.12



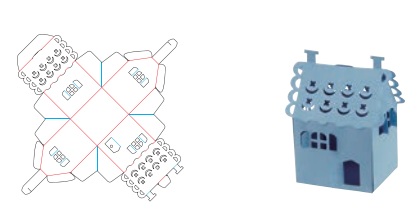
No.13



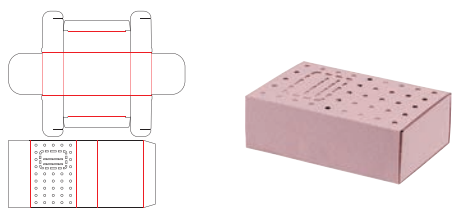
No.14



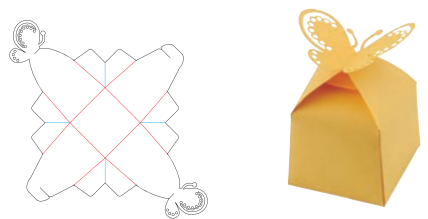
No.15



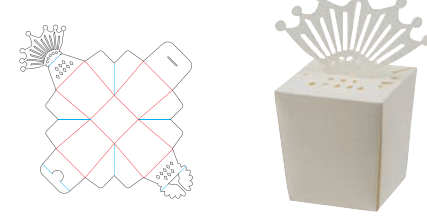
No.16



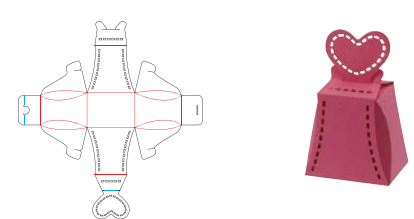
No.17



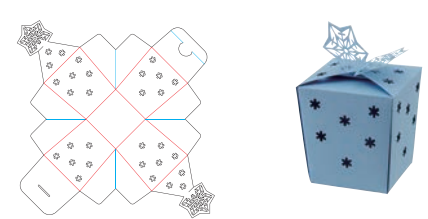
No.18



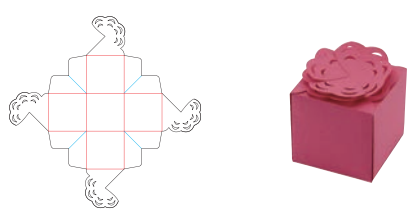
No.19



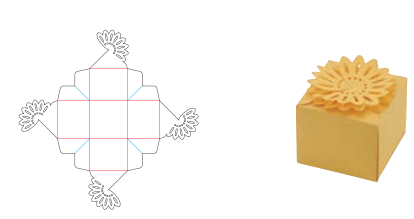
No.20



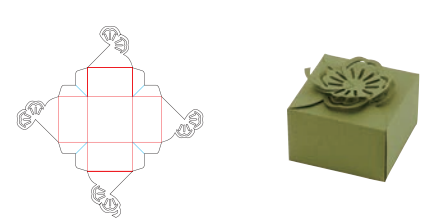
No.21



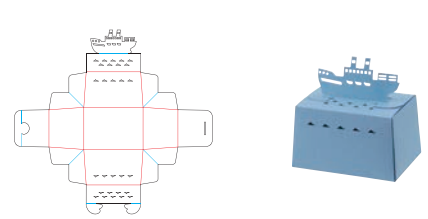
No.22



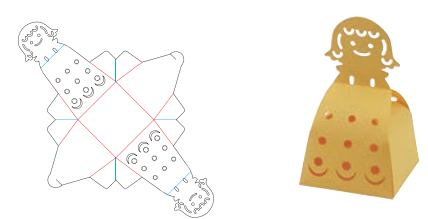
No.23



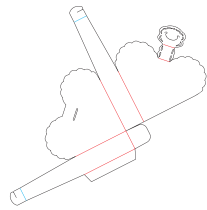
No.24



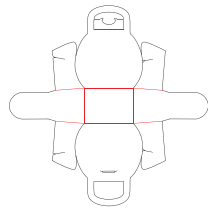
No.25



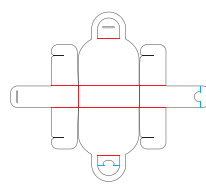
No.26



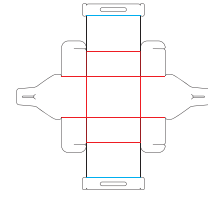
No.27



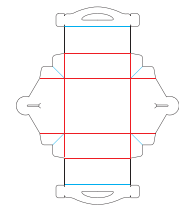
No.28



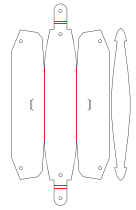
No.29



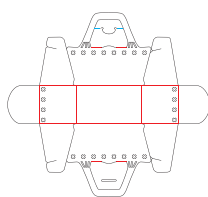
No.30



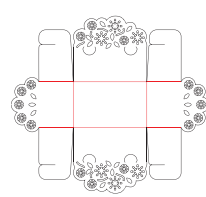
No.31



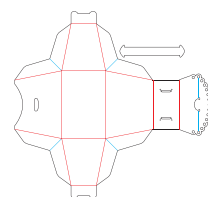
No.32



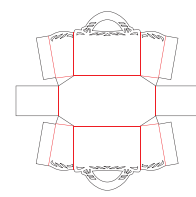
No.33



No.34



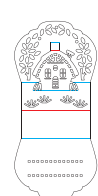
No.35



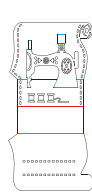
No.36



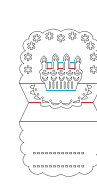
No.37



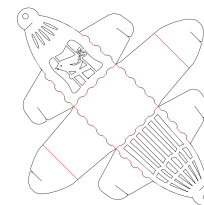
No.38



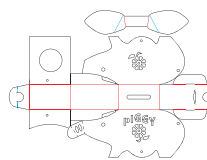
No.39



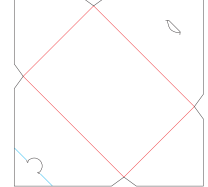
No.40



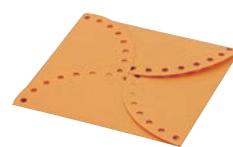
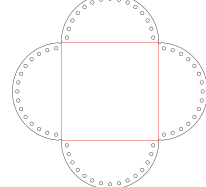
No.41



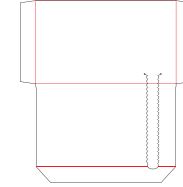
No.42



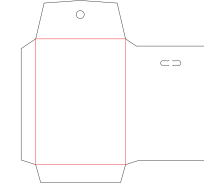
No.43



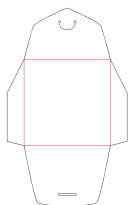
No.44



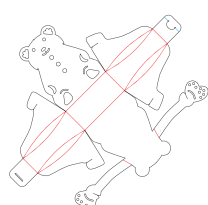
No.45



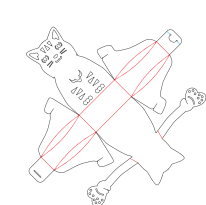
No.46



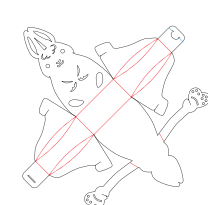
No.47



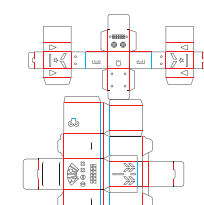
No.48



No.49



No.50



© 2015 pigpong

EN Depending on the pattern being used, the material may not be cut cleanly, if reducing the size of the pattern. Before making your project, perform trial cutting with the same material.

DE Je nach verwendetem Muster wird das Material möglicherweise nicht sauber geschnitten, wenn das Muster verkleinert wird. Führen Sie vor dem Erstellen Ihres Projekts ein Probeschneiden mit dem gleichen Material durch.

FR Si vous réduisez la taille d'un motif, il est possible que celui-ci ne soit pas coupé parfaitement. Avant de créer votre projet, effectuez un test de découpe sur du matériel de même type que celui utilisé pour votre projet.

NL Afhankelijk van het patroon dat u gebruikt, wordt het materiaal mogelijk niet goed gesneden als u het formaat van het patroon verkleint. Voordat u uw project gaat uitvoeren, moet u proefsneden maken met hetzelfde materiaal.

IT A seconda del disegno utilizzato, il materiale potrebbe non essere tagliato con precisione se si riducono le dimensioni del disegno. Prima di creare il progetto, eseguire un taglio di prova con lo stesso materiale.

ES Dependiendo del patrón que se esté utilizando, es posible que el material no quede bien cortado si se reduce el tamaño del patrón. Antes de empezar el proyecto, realice una prueba de corte con el mismo material.

PT Dependendo do padrão que está sendo usado, o material pode não ser cortado de forma adequada se o tamanho do padrão for reduzido. Antes de elaborar seu projeto, realize um teste de corte com o mesmo material.

RU Для некоторых рисунков при уменьшении размера рисунка вырезание материала может быть выполнено неаккуратно. Перед началом работы с изделием выполните пробное вырезание на таком же материале.

JA カットする模様によって、縮小時ときれいにカットできない場合があります。カットを始める前に、作品に使用する素材を使って試し切りをしてください。

Designed by © 2015 pigpong, Yoko Ganaha.

Entworfen von © 2015 pigpong, Yoko Ganaha.

Créé par © 2015 pigpong, Yoko Ganaha.

Ontwikkeld door © 2015 pigpong, Yoko Ganaha.

Realizzati da © 2015 pigpong, Yoko Ganaha.

Diseñados por © 2015 pigpong, Yoko Ganaha.

Desenhado por © 2015 pigpong, Yoko Ganaha.

Автор: дизайнер © 2015 pigpong, Yoko Ganaha.

デザイン: © 2015 ビボンがなはようこ

© 2015 Brother Industries, Ltd.